



GOOD MORNING
Have Good Trading Day

THURSDAY



Price is what you pay.
Value is what you get.

- Warren Buffet



MARKET PLUSE

INDIAN INDICES

NAME	CMP	NET CH.	%
SENSEX	28223	+151	+0.54
NIFTY	8567	+51	+0.60

INDIAN ADR'S

SYMBOL	CLOSE	GAIN/ LOSS %
DRREDDY	67.44	+2.54
HDFCBANK	63.06	+0.19
ICICIBK	10.31	-0.29
INFY	17.39	+2.66
TATAMOTOR	29.26	+1.26
WIPRO	12.65	+3.43

FII AND MF ACTIVITY

SYMBOL	In Crs.
FIIs Eq (Provisional)	447.9
FIIs Index Future	598.31
FIIs Index Options	438.98
FIIs Stock Future	227.55
FIIs Stock Options	37.06
DII's Eq (Provisional)	-189.11

CURRENCY

RBI RATE	05-AUG-2015
RUPEE - \$	63.8159
EURO	69.3104
YEN 10	51.2900
GBP	99.1508

MARKET PLUSE

GLOBAL INDICES

NAME	CMP	NET CH.	%
DOW	17540	-10	-0.06
NASDAQ	5139	+34	+0.67
NIKKEI	20774	+160	+0.78
HANG SENG	24374	-140	-0.57
SGX NIFTY	8579	-14	-0.16

WORLD COMMODITIES

FUTURE	U\$\$	CHANGES
CRUDE	45.17	+0.02
NATURAL GAS	2.777	-0.021
GOLD	1083.9	-1.7
SILVER	14.540	-0.013
COPPER	2.3570	+0.0085

WORLD EVENTS

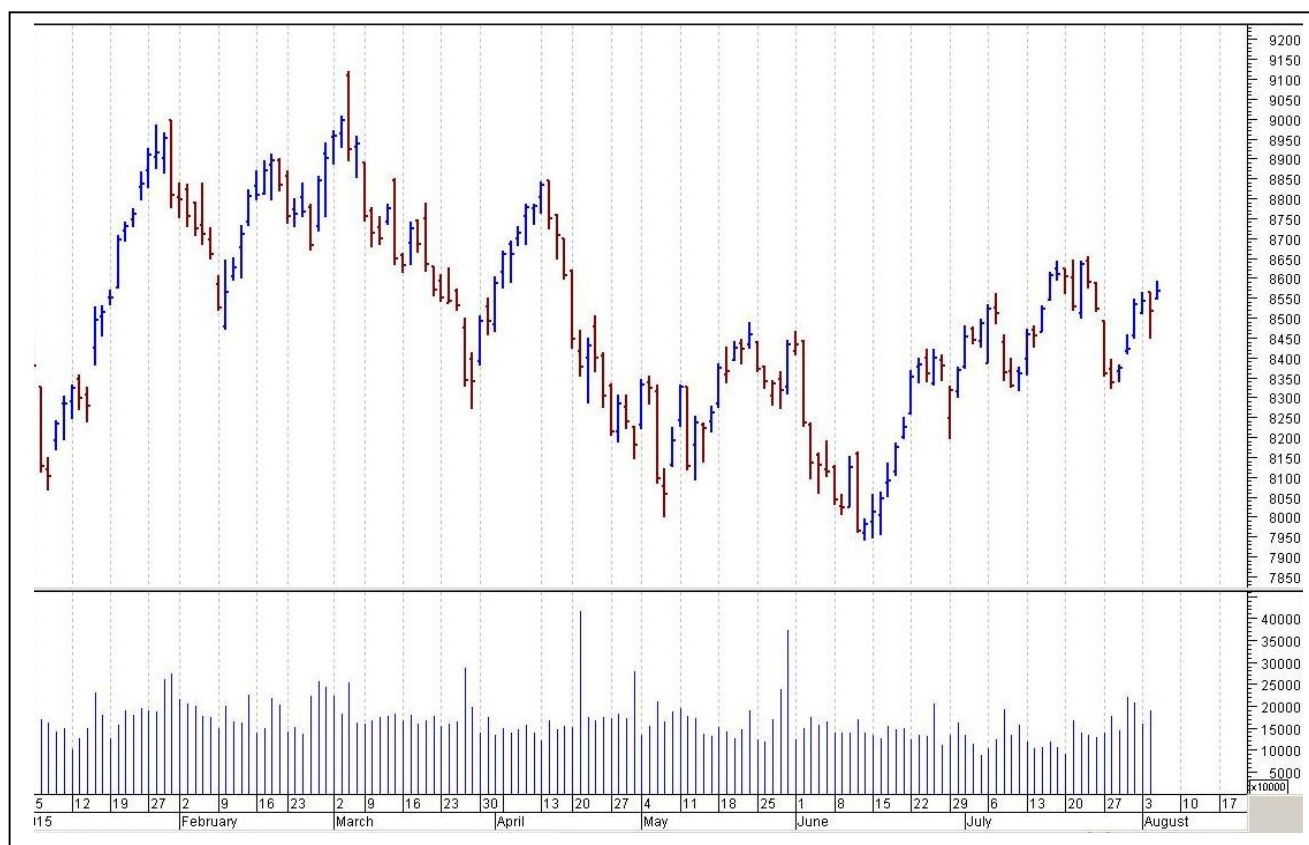
- US: Unemployment Claims
- UK: Manufacturing Production m/m
- BOE Inflation Report
- MPC Official Bank Rate Votes
- Official Bank Rate
- MPC Rate Statement
- BOE Gov Carney Speaks

TOP STORY

- Cognizant Q2 Net Income At \$420.1 m Vs \$382.9 m (QoQ) Revenue At \$3.09 Bn Vs \$2.91 Bn (QoQ)
- Bata India Q1 Net Profit Up 55.2% At `92.2 Cr Vs `59.4 Cr (YoY) Total Income Up 9.4% At `680.5 Cr Vs `622 Cr (YoY)
- PTC India Q1 Net Profit Up 9.6% At `47.9 Cr Vs `43.7 Cr (YoY) Total Income Down 10.7% At `3,296.2 Cr Vs `3,689.5 Cr (YoY)
- Himachal Pradesh Govt Allots 960 MW Jhangi-Thopan-Powari Hydro Project To Reliance Infra
- ICICI Bank raises `3200 cr through offshore bond issue
- PFC to buy back infra bonds to cut interest costs (ET)
- Bennett Coleman & Co ties up with Shoppers Stop to push Femina in consumer products space
- SEBI Asks Cos To Make More Disclosures About Pledged Shares: PTI
- Govt Shortlists SBICAP, ICICI Securities, YES BANK For Divestment Of Oil India, CONCOR, NMDC, MMTC & ITDC



NIFTY CHART



MARKET COMMENTARY

Resuming their northward journey, Indian equity benchmarks ended the Wednesday's trade with a gain of over half a percent with frontline gauges recapturing their crucial 8,550 (Nifty) and 28,200 (Sensex) levels. Markets after a gap-up opening traded in a very tight-band throughout the session, though mild profit booking was witnessed in last leg of trade. Sentiment remained up-beat on report that the central bank retained its growth forecast of 7.6% for the financial year ending March 2016, citing a gradually improving outlook on the back of better real income from the decline in commodity prices and likelihood of better agricultural income if the monsoon continues to improve. For today's trade Nifty likely to trade in the range between 8580 – 8600 in the upper side and 8540 – 8530 in the lower side.

MARKET LEVELS

	CMP	SUPPORT LEVELS				RESISTANCE LEVELS			
NIFTY	8567	8540	8530	8510	8480	8580	8600	8620	8650
USDINR	64.02	63.96	63.88	63.72	63.65	64.1	64.18	64.24	64.3



FUTURES CORNER

SCRIPS	CLOSE	SUPPORT	TARGET		REMARKS
		STOP LOSS	T1	T2	
RCOM	72.55	71	75	77	TRADING CALL
WIPRO	576.75	571	585	597	TRADING CALL
DABUR	308.05	304	318	327	TRADING CALL

EQUITY CORNER

SCRIPS	CLOSE	SUPPORT	TARGET		REMARKS
		STOP LOSS	T1	T2	
PENIND	66.45	64	72	77	TRADING CALL
VENUSREM	156.6	151	161	167	TRADING CALL

DELIVERY BASED CALL / INVESTMENT CALL

SCRIPS	CMP	SUPPORT	TARGET		REMARK
		STOP LOSS	T1	T2	

BULK DEALS (BSE)

SCRIP	CLIENT NAME	BUY/SELL	QUANTITY	PRICE
SALZER	MERRILL LYNCH CAPITAL MARKETS ESPANA SA SV	S	274,171	260.31
SALZER	LARSEN & TOUBRO LIMITED	S	1,847,358	290.25
SALZER	ORANGE MAURITIUS INV. LTD	S	75,000	304

BULK DEALS (NSE)

SCRIP	CLIENT NAME	BUY/SELL	QUANTITY	PRICE
SUBEX	DEUTSCHE BANK AG LONDON	SELL	4600000	16.07
ACE	INDIA OPPORTUNITIES GROWTH FUND LTD - PINWOOD STRATEGY	BUY	675000	51.15
BALAJITELE	GEECEE INVESTMENTS LIMITED	BUY	332000	87.54

SCRIP'S IN F&O BAN

(To resume for normal trading below 80% of market wide limit required)

AMTEKAUTO



NIFTY 50 STOCKS: SUPPORT & RESISTANCE						
Symbol	Close	Support 1	Support 2	Pivot Point	Resistance1	Resistance2
ACC	1381.75	1372.50	1363.25	1385.25	1394.50	1407.25
AMBUJACEM	229.65	228.20	226.75	230.35	231.80	233.95
ASIANPAINT	923.30	897.10	870.90	911.95	938.15	953.00
AXISBANK	580.40	574.77	569.13	582.13	587.77	595.13
BAJAJ-AUTO	2576.65	2526.15	2475.65	2556.50	2607.00	2637.35
BANKBARODA	189.00	185.98	182.97	189.17	192.18	195.37
BHARTIARTL	417.55	412.97	408.38	420.33	424.92	432.28
BHEL	280.55	277.15	273.75	282.55	285.95	291.35
BOSCHLTD	26299.45	25894.63	25489.82	26209.82	26614.63	26929.82
BPCL	930.60	921.87	913.13	936.43	945.17	959.73
CAIRN	167.20	165.70	164.20	168.05	169.55	171.90
CIPLA	718.60	711.10	703.60	716.50	724.00	729.40
COALINDIA	438.50	434.37	430.23	440.73	444.87	451.23
DRREDDY	4191.80	4151.30	4110.80	4180.65	4221.15	4250.50
GAIL	344.95	342.03	339.12	344.92	347.83	350.72
GRASIM	3762.55	3723.82	3682.88	3755.93	3796.87	3828.98
HCLTECH	937.40	925.27	917.63	937.63	945.27	957.63
HDFC	1302.45	1291.07	1279.68	1311.08	1322.47	1342.48
HDFCBANK	1092.20	1078.27	1070.08	1090.13	1098.32	1110.18
HEROMOTOCO	2666.00	2560.40	2496.95	2677.10	2740.55	2857.25
HINDALCO	108.25	106.53	103.82	108.47	111.18	113.12
HINDUNILVR	908.60	900.62	893.13	907.53	915.02	921.93
ICICIBANK	311.35	308.98	303.92	312.12	317.18	320.32
IDEA	165.80	160.85	157.60	166.25	169.50	174.90
INDUSINDBK	952.65	937.23	922.17	955.12	970.18	988.07
INFY	1086.35	1045.85	1034.45	1062.40	1073.80	1090.35
ITC	331.80	325.78	321.67	328.67	332.78	335.67
KOTAKBANK	691.90	681.00	671.15	690.00	699.85	708.85
LT	1779.60	1757.57	1740.38	1776.18	1793.37	1811.98
LUPIN	1680.40	1624.62	1608.73	1649.98	1665.87	1691.23
M&M	1386.85	1344.13	1323.97	1357.02	1377.18	1390.07
MARUTI	4471.65	4415.52	4392.23	4434.73	4458.02	4477.23
NMDC	101.75	100.73	99.77	101.57	102.53	103.37
NTPC	136.75	133.90	132.65	134.90	136.15	137.15
ONGC	270.00	262.78	259.22	268.27	271.83	277.32
PNB	159.00	154.70	150.25	157.60	162.05	164.95
POWERGRID	140.75	139.80	138.60	141.15	142.35	143.70
RELIANCE	987.75	976.78	965.57	991.22	1002.43	1016.87
SBIN	285.40	280.02	271.43	284.98	293.57	298.53
SUNPHARMA	841.90	821.80	813.50	828.30	836.60	843.10
TATAMOTORS	376.40	376.83	372.92	381.92	385.83	390.92
TATAPOWER	69.75	68.90	67.90	69.55	70.55	71.20
TATASTEEL	262.30	248.32	240.33	254.03	262.02	267.73
TCS	2547.15	2488.93	2468.97	2505.97	2525.93	2542.97
TECHM	550.60	527.80	513.55	538.40	552.65	563.25
ULTRACEMCO	3216.40	3103.37	3061.68	3146.68	3188.37	3231.68
VEDL	127.70	124.90	122.35	126.65	129.20	130.95
WIPRO	575.35	554.60	549.35	562.75	568.00	576.15
YESBANK	830.60	829.97	818.28	836.73	848.42	855.18
ZEEL	414.50	399.73	396.27	402.52	405.98	408.77



CORPORATE ACTION / BOARD MEETINGS

NSE Download Ref.No.:NSE/CML/3028:- Suspension of trading in securities of Company Clutch Auto Limited for non-compliance of certain clauses of Listing Agreementw.e.f 11-Aug-2015

NSE Download Ref No :NSE/FAOP/30304:- Exclusion of Futures and Options contracts on JPPOWER wef September 25, 2015

BOARD MEETINGS

COMPANY NAME	DATE	PURPOSE	RS. PER SH.
ICRA	6-Aug-15	Annual General Meeting / Dividend	24
CASTROLIND	6-Aug-15	Dividend	4
VIMTALABS	6-Aug-15	Annual General Meeting / Dividend	1
MUNJALSHOW	6-Aug-15	Annual General Meeting / Dividend	4
JBCHEPHARM	6-Aug-15	Annual General Meeting / Dividend	14
MASTEK	6-Aug-15	Annual General Meeting / Dividend	1
ELECON	6-Aug-15	Annual General Meeting / Dividend	1.1
AMARAJABAT	6-Aug-15	Annual General Meeting / Dividend	3.61
DIVISLAB	6-Aug-15	Annual General Meeting / Dividend	20
MRF	6-Aug-15	Dividend	3
NEULANLAB	6-Aug-15	Annual General Meeting / Dividend	1.5
AKZOINDIA	6-Aug-15	Annual General Meeting / Dividend	20
SARDAEN	6-Aug-15	Dividend	3
TIPSINDLTD	6-Aug-15	Annual General Meeting / Dividend	1
MANGLMCEM	6-Aug-15	Annual General Meeting / Dividend	2
ORBTEXP	6-Aug-15	Annual General Meeting / Dividend	2.25
IGPL	7-Aug-15	Annual General Meeting / Dividend	1
STERTOOLS	7-Aug-15	Dividend	5
LICHSGFIN	7-Aug-15	Annual General Meeting / Dividend	5
HINDCOPPER	7-Aug-15	Annual General Meeting / Dividend	0.15
JAYBARMARU	7-Aug-15	Annual General Meeting / Dividend	2
HCLTECH	7-Aug-15	Dividend	5

NEWS & RUMOURS:

- Gold (Spot Dollar) major support = \$1056/\$1024 & Resistance = \$1110/\$1143.
- Crude oil range->\$40 to \$50.
- U.S. Stocks Rise amid Priceline Results, Weaker ADP Payroll Data: - U.S. stocks rose for the first time in four days, amid better-than-estimated earnings from technology companies and as commodities producers rallied.
- Fed's rate path to define dollar strength in the coming year: Reuter's poll: - With the U.S. Federal Reserve poised to hike interest rates as early as next month, the dollar will rise in the coming year, but by how much will depend on the course of monetary policy, a Reuter's poll found.
- Greece wants full bailout, not bridge loan, ruling party says: - The parliamentary spokesman for Greece's ruling Syriza party urged it on Wednesday to unite behind a new funding agreement, saying the country wanted a full bailout immediately rather than a bridge loan.
- Copper holds near 6-year low amid China stock market volatility: - Copper prices declined on Wednesday, remaining near six-year lows hit earlier in the week, as investors continued to monitor movements on China's volatile stock market.
- U.S. natural gas futures raise as market awaits storage report: - U.S. natural gas prices rose for the third consecutive session on Wednesday, as market participants looked ahead to fresh weekly information on U.S. gas inventories to gauge the strength of demand for the fuel. Demand for natural gas tends to fluctuate in the summer based on hot weather and air conditioning use. Natural gas accounts for about a quarter of U.S. electricity generation.

TRENDS & OUTLOOK – DATE: 06- Aug- 2015

PRECIOUS METALS:

COMMDITY (MCX)	S2	S1	PIVOT POINT	R1	R2
GOLD (Oct)	24100	24420	24730	25036	25371
SILVER (Sep)	31111	32200	33500	34700	36000

BASE METALS

COMMDITY (MCX)	S2	S1	PIVOT POINT	R1	R2
COPPER (Aug)	321	326	332	337	345
ZINC (Aug)	116.10	118.60	121.50	123.45	126.70
LEAD (Aug)	105.10	107.55	110.10	112.75	114.90
NICKEL (Aug)	660	681	697	718	736

ENERGY

COMMDITY (MCX)	S2	S1	PIVOT POINT	R1	R2
CRUDE OIL (Aug)	2700	2811	2925	3004	3135
NATURAL GAS (Aug)	167	174	181	187	194

DATE TALKS : TODAY'S ECONOMIC DATA :

German Factory Orders, Manufacturing Production of GBP, BOE Inflation Report, Official Bank Rate of GBP, Challenger Job Cuts, and BOE Gov Carney speak, Unemployment Claims, NIESR GDP Estimate, and Natural Gas Storage.



Registered Office

Indira House, 3rd Floor, 5 Topiwala Lane,
Opp. Lemington Road Police Station, Grant Road (East), Mumbai - 400007.

Corporate Office

'Ramavat House' E-15, Saket Nagar, Indore - 452018 (M.P.)

Customer Care

Tel: +91-731-4097170/ 71/ 72/ 73/ 74 M. +91 93031 72345

Email: customercare@indiratrade.com www.indiratrade.com



INSTITUTIONAL DEALING UNIT

Africa House, 5, Topiwalla Lane, Lamington Road, Mumbai, 400007

Tel: +91 22 30080678 Fax : +91 22 23870767 Email : ie@indiratrade.com

Disclaimer

This report is for private circulation within the Indira Group. This report is strictly confidential and for information of the selected recipient only and may not be altered in any way, transmitted to, copied or distributed, in part or in whole, to any other person or to the media or reproduced in any form. This report should not be construed as an offer or solicitation to buy or sell any securities or any interest in securities. It does not constitute a personal recommendation or take into account the particular investment objectives, financial situations, or any such factor. The information, opinions estimates and forecasts contained here have been obtained from, or are based upon, sources we believe to be reliable, but no representation of warranty, express or implied, is made by us to their accuracy or completeness. Opinions expressed are our current opinions as of the date appearing on this material only and are subject to change without notice.